

Model B

The Model B® is a manual wall or ceiling-mounted screen with nylon bearings and is designed for medium-sized rooms. The pull down system locks at intervals to fit various projection formats.

Features

- Nylon bearings for smooth, quiet operation
- White powder-coated case
- Sizes up to 8'
- Includes pull cord

Optional Accessories:

- Mounting and Extension Brackets
- Pull Rod
- T-Bar Clips
- Tilt Lock
- Red Laser Pointers
- Green Laser Pointers
- RF PowerPoint Remote with Green Laser Pointer



16:9 HDTV Format

Viewing Area (H x W)		Nominal Diagonal		Overall Case Length	
in.	cm	in.	cm	in.	cm
37½" x 67"	95 x 170	77"	196	73⅝"	186
45" x 80"	114 x 203	92"	234	87⅝"	222
52" x 92"	132 x 234	106"	269	99⅝"	252

16:10 Wide Format

Viewing Area (H x W)		Nominal Diagonal		Overall Case Length	
in.	cm	in.	cm	in.	cm
50" x 80"	127 x 203	94"	239	87⅝"	222
57½" x 92"	146 x 234	109"	277	99⅝"	252

4:3 Video Format

Viewing Area (H x W)		Nominal Diagonal		Overall Case Length	
in.	cm	in.	cm	in.	cm
43" x 57"	109 x 145	72"	183	63⅝"	161
50" x 67"	127 x 170	84"	213	73⅝"	186
57" x 77"	145 x 196	96"	244	84⅝"	214
60" x 80"	152 x 203	100"	254	87⅝"	222
69" x 92"	175 x 234	120"	305	99⅝"	252

Available with the Following Screen Surfaces



Matte White

Half Angle: 60° Gain: 1.0



High Contrast Matte White

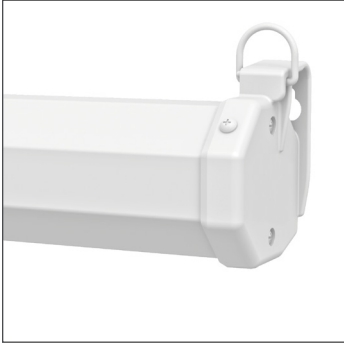
Half Angle: 50° Gain: 1.1



Video Spectra 1.5

Half Angle: 35° Gain: 1.5

Product images



White Case (Standard)



Black Case



A Milestone AV Technologies Brand

3100 North Detroit Street
Warsaw, Indiana 46582
P: 574.267.8101 or 800.622.3737
F: 574.267.7804 or 877.325.4832
E: info@da-lite.com
www.da-lite.com

DL-0505 08.14

© 2014 Milestone AV Technologies LLC. Printed in U.S.A.