

# Slimline Electrol

The Slimline® Electrol® is a value engineered projection screen designed with a smaller, compact case that allows unobtrusive placement in a room, and can be mounted on a wall or ceiling. The pre-wired inline power cord provides convenience for the do-it-yourself home theater.

## Features

- In-the-roller motor mounting system
- Pre-wired, inline power cord switch
- White steel case

## Optional Accessories:

- Mounting and Extension Brackets
- T-Bar Clips
- Red Laser Pointers
- Green Laser Pointers
- RF PowerPoint Remote with Green Laser Pointer



## 16:9 HDTV Format

Viewing Area (H x W)		Nominal Diagonal		Overall Case Length	
in.	cm	in.	cm	in.	cm
45" x 80"	114 x 203	92"	234	89¼"	227

## 4:3 Video Format

Viewing Area (H x W)		Nominal Diagonal		Overall Case Length	
in.	cm	in.	cm	in.	cm
50" x 67"	127 x 170	84"	213	81"	206
60" x 80"	152 x 203	100"	254	95"	241

Available with the Following Screen Surfaces

---

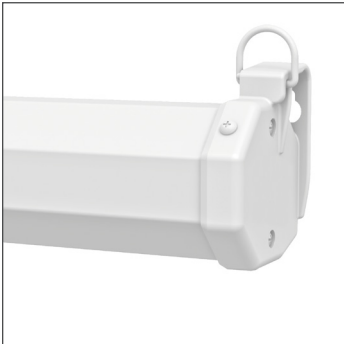


**Matte White**

Half Angle: 60° Gain: 1.0

**Product images**

---



White Case (Standard)



Black Case



A Milestone AV Technologies Brand

3100 North Detroit Street  
Warsaw, Indiana 46582  
P: 574.267.8101 or 800.622.3737  
F: 574.267.7804 or 877.325.4832  
E: [info@da-lite.com](mailto:info@da-lite.com)  
[www.da-lite.com](http://www.da-lite.com)

DL-0451 07.14

© 2014 Milestone AV Technologies LLC. Printed in U.S.A.