



The Salara is a new generation in electric projection screens. In your home or office, the Salara makes a design statement. The Salara's small, elliptical case and domed endcaps are finished in solid white. Floating gunlatch wall mounting brackets grip the screen securely and are barely visible.

## Screen Type

Motorized, wall-mounted projection screen

## Viewing Surfaces

- **OptiView Family** (self-supporting front screen surfaces): Matt White XT1000E, Contrast Grey XH800E, Contrast White XH1100E, Argent White XH1500E, Pearl White CH1900E, Glass Beaded CH3200E
- **ClearSound Family** (acoustically transparent screen surfaces): ClearSound White Weave XT900E, ClearSound Grey Weave XH600E, ClearSound Perf XT950E

## Features

- Includes one 110-120v or 220v 3-position switch.
- Case dimensions are 3 <sup>13</sup>/<sub>16</sub>" H x 5 <sup>1</sup>/<sub>16</sub>" D (9.7 cm H x 12.9 cm D)
- Elliptical extruded aluminum case with domed endcaps and white finish
- Floating gunlatch wall brackets grip the screen securely and are barely visible
- NTSC, HDTV and WideScreen format have image area framed with black on all four sides
- Warranted for one year against defects in materials and workmanship
- Patent pending

## Options

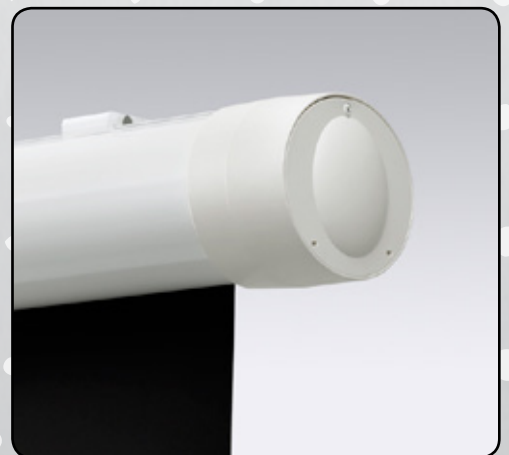
- **Controls**—Can be furnished with standard [control options](#)
- **Motors**—Available with optional 220v motor
- **Viewing Surfaces**—Numerous self-supporting [viewing surfaces](#) available
- Extra drop above viewing area is available, specify color. Some sizes include 12" (30 cm) black drop as standard

## Sizes

- **16:10 Format**—from 67" (170 cm) to 109" (277 cm) diagonal
- **16:9 HDTV Format**—from 65" (165 cm) to 106" (269 cm) diagonal
- **4:3 NTSC/PAL Format**—from 72" (183 cm) to 120" (305 cm) diagonal
- **AV Format**—from 50" x 50" (127 cm x 127 cm) to 96" x 96" (244 cm x 244 cm) viewing area
- Custom sizes available

## Supporting Documents

All instructions, technical drawings and other supporting documents are located at <http://www.draperinc.com/Documents.aspx>



For more information on this product visit:  
[www.draperinc.com/go/Salara.htm](http://www.draperinc.com/go/Salara.htm)

