



Silhouette/Series V is a motorized projection screen with Draper's patented Tab-Tensioning System. The sleek, curved aluminum case and endcaps are finished in white (also available in black or dove grey). Silhouette/Series V offers a slender and contemporary look and can be wall or ceiling-mounted. The screen and dowel retract completely inside the case.

## Screen Type

Motorized, wall or ceiling-mounted, tab-tensioned projection screen

## Viewing Surfaces

- **OptiFlex Family** (tensioned front screen surfaces): Matt White XT1000V, Grey XH600V, Pearl White MH1500V, ReAct MS1000V
- **CineFlex Family** (rear projection screen surfaces): CineFlex CH1200V, CineFlex MH800V, and CineFlex White XT600V
- **ClearSound Family** (acoustically transparent screen surfaces): ClearSound NanoPerf XT800V and ClearSound Perf XT900V
- **TecVision** (premium engineered screen surfaces): XH700X Grey, XH900X Grey, MS1000X Grey, XT1000X White, XT1100X White, XT1300X White, XT1600X White, XT1800X White

## Features

- Includes one 110-120v or 220v 3-position switch
- Case dimensions are 6" H x 4<sup>3</sup>/<sub>4</sub>" D (15.2 cm H x 12.1 cm D)
- 12" (30 cm) of black drop at top of screen is standard
- Image area framed with black on all four sides
- Warranted for one year against defects in materials and workmanship
- US Patent Nos. 5,296,964; 6,111,694

## Options

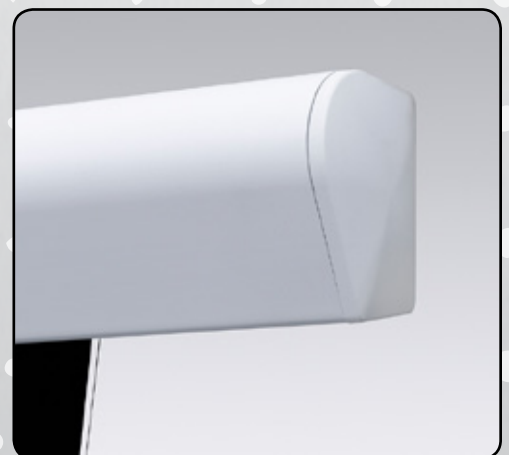
- **Controls**—Can be furnished with standard [control options](#)
- **Motors**—Available with [Plug & Play Motor with built-in Low Voltage Controller](#), [Plug & Play with built-in Quiet and Low Voltage Controller](#) and 220v motor
- **Viewing Surfaces**—Numerous tensioned [viewing surfaces](#) available
- **Accessories**—Numerous [accessories](#) are available for this screen model
- Black or dove grey case finish available at no charge

## Sizes

- **16:10 Format**—from 67" (170 cm) to 113" (287 cm) diagonal
- **16:9 HDTV Format**—from 65" (165 cm) to 110" (279 cm) diagonal
- **4:3 NTSC/PAL Format**—from 72" (183 cm) to 120" (305 cm) diagonal
- **AV Format**—from 50" x 50" (127 cm x 127 cm) to 96" x 96" (244 cm x 244 cm) viewing area
- Custom sizes available

## Supporting Documents

All instructions, technical drawings and other supporting documents are located at <http://www.draperinc.com/Documents.aspx>



For more information on this product visit:  
[www.draperinc.com/go/SilhouetteV.htm](http://www.draperinc.com/go/SilhouetteV.htm)

