

SONY

3LCD Laser Light Source Projector VPL-FWZ65

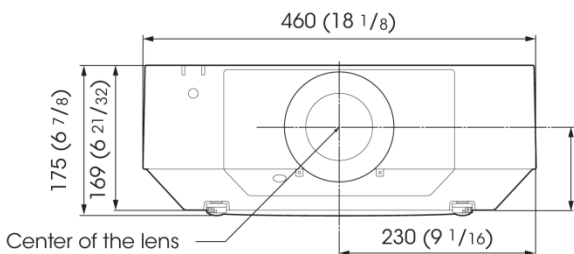
Key Features

- 6,000 lumens
- Native WXGA (1,280 x 800) Resolution
- Laser Light Source “Z-Phosphor” and 3LCD Projection System
- Bright Era™ Long-lasting Optics
- Reality Creation
- Contrast Enhancer
- 20,000h*1 of Virtually Zero Maintenance Operation
- Hassle-free Automatic Filter Cleaning
- Energy-efficient Functions
- Powered Lens Shift Function
- Variety of Optional Lenses
- Tilt Angle Free
- HDBaseT™ Compatibility
- Edge Blending
- 34dB/28dB Super Quiet Operation Noise
- Professional Calibration
- Instant ON/OFF
- Constant Brightness Mode

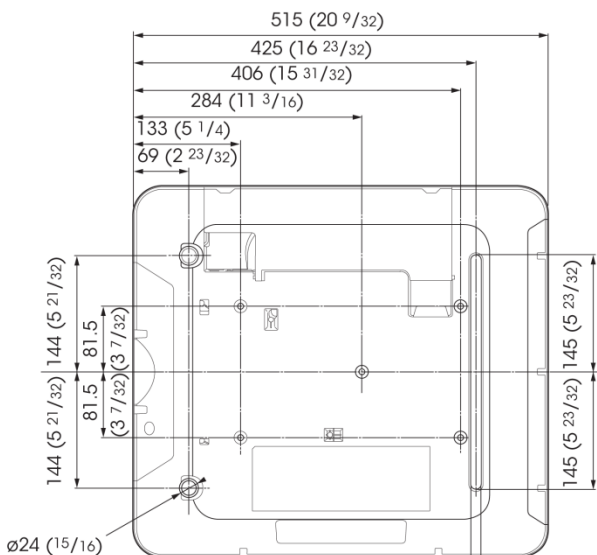
*1 Actual hours may vary depending on usage environment

Dimensions (Front)

Unit: mm (inches)



Dimensions (Bottom)



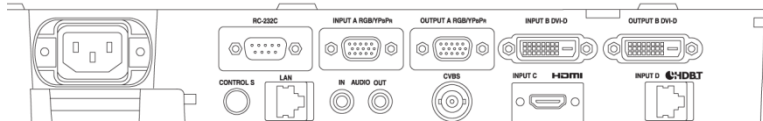
WXGA/6,000lm

Optical		
Light Output / Color Light Output		6000 lumens (high mode) 4000 lumens (Std. mode)
LCD Panels		0.76" x 3 BrightEra LCD Panel
Panel Display Resolution		WXGA (1280 x 800 dots)
Contrast Ratio		10,000:1 (Full white/full black) *1
Light source		Laser diode
Projection Lens *2	Zoom / Focus	Approx. 1.6x Powered / Powered
	Lens Shift	Powered, Vertical : -5%, +60% Horizontal : +/- 32%
	Throw Ratio	1:39:1 to 2.23:1
Screen Size		40" to 600" (depends on the lens)
Interface		
Computer and Video Input/Output	INPUT A	Mini D-sub 15-pin (RGB/Y Pb Pr) Audio: Stereo mini jack
	INPUT B	DVI-D (HDCP support)
	INPUT C	HDMI
	INPUT D	RJ45 (HDBaseT)
	VIDEO IN	BNC
	OUTPUT A	Mini D-sub 15-pin
Control Signal Input/Output	OUTPUT B	DVI-D (HDCP not supported)
	RS-232C	D-sub 9 pin
	LAN	RJ45, 10BASE-T/100BASE-TX
	Control S IN	Stereo mini jack (DC5V)
General		
Scanning Frequency		H: 15 to 92kHz, V: 48 to 92Hz
Display Resolution	Computer signal input	Maximum display resolution : 1920x1200 dots
	Video signal input	NTSC, PAL, SECAM, 480/60i, 576/50i, 480/60p, 576/50p, 720/60p, 720/50p, 1080/60i, 1080/50i, The following items are available for digital signal only: 1080/60p, 1080/50p, 1080/24p
Color System		NTSC3.58, PAL, SECAM, NTSC4.43, PAL-M, PAL-N, PAL60
UPC Code		0 2724 288634 6 (Color : W)
Power Requirements		AC 100V to 240V, 5.5A to 2.3A, 50Hz/60Hz
Power Consumption		464W (AC 100V-120V) 453W (AC 220V-240V)
Standby Mode Power Consumption		15.0W (Std) / 0.5W (Low) (AC 100V-120V) 13.3W (Std) / 0.5W (Low) (AC 220V-240V)
Acoustic Noise (Light Mode)		34dB (High), 28dB (Standard), 34dB(Extended)
Dimensions (W x H x D)		460 x 169 x 515 mm 18 1/8 x 6 3/5 x 20 3/8"
Mass		16kg (34lb)
Optional Accessories		
Projector Suspension Support		PAM-600, PSS-650 (for VPLL-3003 lens) PSS-650P (extension pole for PSS-650)
Service Parts		
Replacement Filter		4-574-581-01
Replacement Remote		1-492-891-11 (RM-PJ27)

*1 With auto light dimming activated

*2 With supplied standard lens.

Connector Panels



Optional Lenses

	VPLL-3003	VPLL-3007	VPLL-Z3009	VPLL-Z3024	VPLL-Z3032
TR	0.33:1	0.65:1	0.85 to 1.0	2.34 to 3.19	3.18 to 4.84
Aperture	f/1.85	f/1.75	f/1.85 to 2.10	f/2.00 to 2.30	f/2.00 to 2.40
Lens Shift	V: +/--5% H: +/--5%	V: +10%/ -5% H: +/- 4%	V: +50%/ -5% H: +/- 24%	V: +60%/ -5% H: +/- 32%	V: +60%/ -5% H: +/- 32%
Screen Size	80"-300"	60"-300"	60"-300"	40"-600"	40"-600"